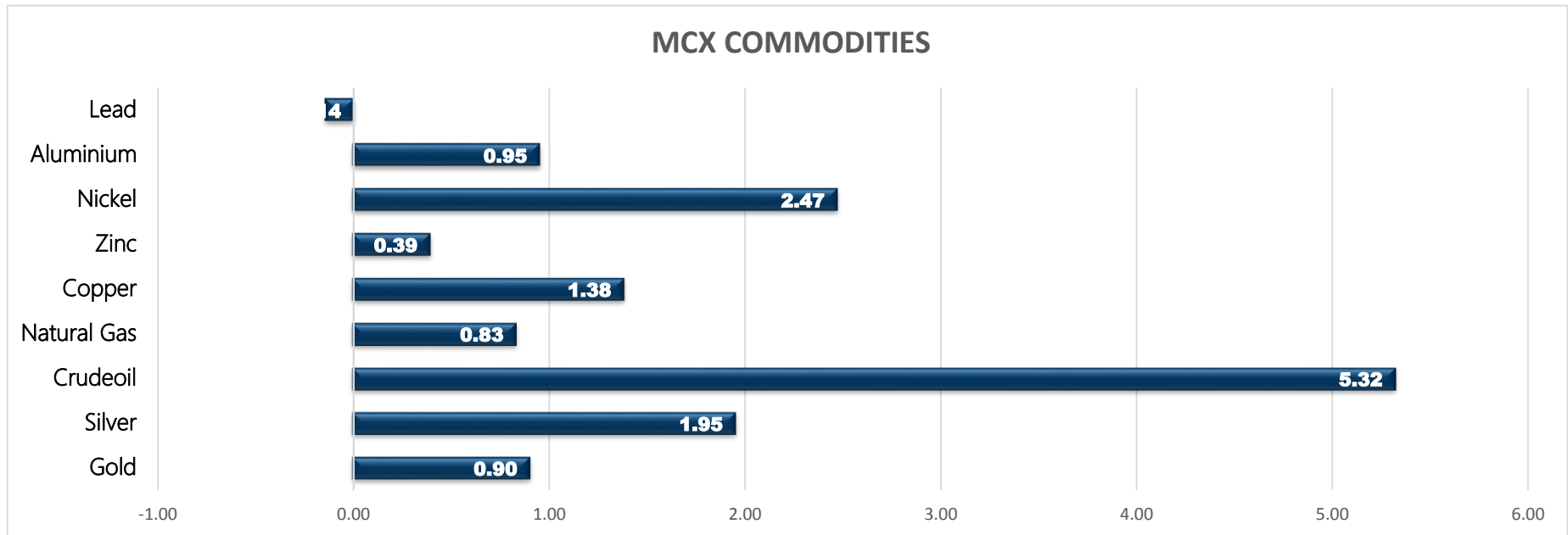


Commodity	Close	% Change
Gold	47584.00	0.90
Silver	62927.00	1.95
Crudeoil	4887.00	5.32
Natural Gas	290.90	0.83
Copper	709.60	1.38
Zinc	247.15	0.39
Nickel	1437.00	2.47
Aluminium	207.75	0.95
Lead	178.85	-0.14

Commodity	Ltp*	% Change
Gold\$	1802.30	-0.15
Silver\$	23.62	0.06
Crudeoil\$	65.64	5.63
Natural Gas\$	3.95	2.44
Lme Copper	9267.50	0.32
Lme Zinc	2953.00	0.44
Lme Nickel	18960.00	0.45
Lme Lead	2298.50	0.79
Lme Aluminium	2596.50	0.10

Economical Data	
EUR	German Final GDP q/q
USD	New Home Sales
USD	Richmond Manufacturing Index

MCX COMMODITIES



MCX MARKET SYNOPSIS

Contract	Open	High	Low	Close	Rs Chg	% Chg	Volume	OI	OI % Chg
Copper Aug	704.40	711.60	700.20	709.60	9.65	1.38	13062	2612	-29.08
Copper Sep	706.80	713.95	701.20	711.95	12.50	1.79	4972	2427	29.30
Zinc Aug	247.40	248.30	246.05	247.15	0.95	0.39	2274	542	-22.01
Zinc Sep	242.95	244.20	242.45	243.40	0.95	0.39	876	773	3.34
Nickel Aug	1423.00	1442.00	1423.00	1437.00	34.60	2.47	6261	943	-39.28
Nickel Sep	1424.00	1430.00	1414.20	1422.70	30.10	2.16	2466	804	12.92
Aluminium Aug	207.30	208.15	206.30	207.75	1.95	0.95	2237	1170	-2.74
Aluminium Sep	205.20	206.85	204.90	206.30	2.25	1.10	1649	1211	29.52
Lead Aug	181.00	181.00	178.60	178.85	-0.25	-0.14	1586	536	-33.75
Lead Sep	179.85	179.85	178.30	178.90	0.90	0.51	348	453	70.30

MCX PIVOT

Contract	Sup - 3	Sup - 2	Sup - 1	Pivot	Res - 1	Res - 2	Res - 3	OI Status
Copper Aug	691.20	695.70	702.60	707.10	714.00	718.50	725.40	Short Covering
Zinc Aug	243.80	244.90	246.10	247.20	248.40	249.50	250.70	Short Covering
Nickel Aug	1407.00	1415.00	1426.00	1434.00	1445.00	1453.00	1464.00	Short Covering
Aluminium Aug	204.90	205.60	206.70	207.40	208.50	209.20	210.30	Short Covering
Lead Aug	175.60	177.10	178.00	179.50	180.40	181.90	182.80	Long Liquidation

INTERNATIONAL MARKET SYNOPSIS

Commodity	Open	High	Low	Ltp*	Chg	% Chg	LME STOCKS	
LME Copper	9073.00	9292.50	9058.50	9238.00	29.50	0.32	LME Copper	-150
LME Zinc	2939.00	2959.50	2919.50	2940.00	13.00	0.44	LME Zinc	6500
LME Nickel	18445.00	19035.00	18445.00	18875.00	85.00	0.45	LME Nickel	-816
LME Lead	2264.00	2297.50	2260.50	2280.50	18.00	0.79	LME Lead	-25
LME Aluminium	2557.50	2605.00	2557.50	2594.00	2.50	0.10	LME Aluminium	-4700

INTERNATIONAL PIVOT

Commodity	Sup - 3	Sup - 2	Sup - 1	Pivot	Res - 1	Res - 2	Res - 3
LME Copper	8866	8962	9100	9196	9334	9430	9568
LME Zinc	2880	2900	2920	2940	2960	2980	3000
LME Nickel	17945	18195	18535	18785	19125	19375	19715
LME Lead	2225	2243	2262	2280	2299	2317	2336
LME Aluminium	2519	2538	2566	2586	2614	2633	2661

COPPER

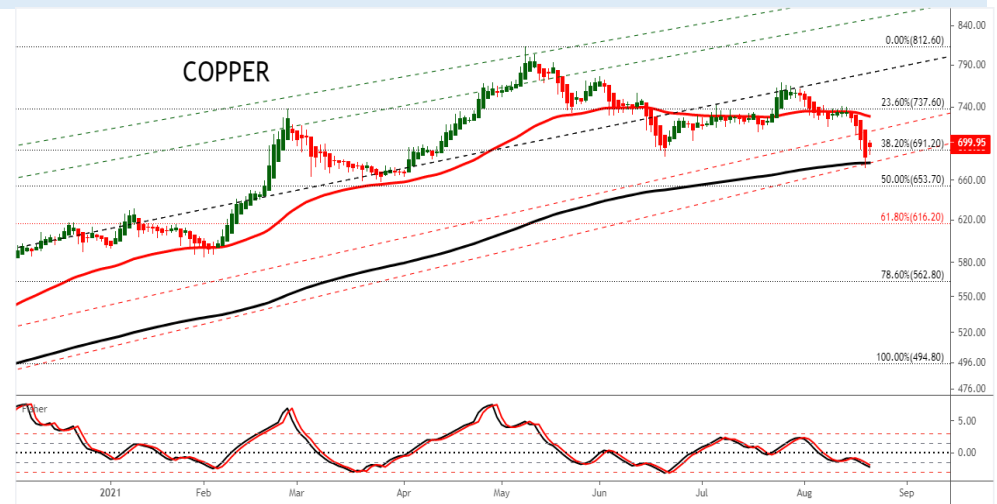
Copper trading range for the day is 695.7-718.5.

Copper rose as hopes of an improvement in demand rose after China, reported no new locally transmitted COVID-19 cases for the first time since July.

Copper market in 2,000 tonnes surplus in May 2021 – ICSG

China left its benchmark lending rate for corporate and household loans unchanged for a 16th straight month at its August fixing

Warehouse stock for Copper at LME was at 254800mt that is down by -150mt.



ZINC

Zinc trading range for the day is 244.9-249.5.

Zinc gains as investors returned to riskier assets after a sharp selloff last week that was fanned by worries about slowing economic growth.

Global zinc market undersupplied by 20,200 tonnes in June, ILZSG says

Investors feared that the economic recovery will be disrupted by the raging delta variant, lowering their expectations for an early tightening of liquidity by the Fed.

Warehouse stock for Zinc at LME was at 239100mt that is up by 6500mt.



NICKEL

Nickel trading range for the day is 1415-1453.

Nickel prices gained amid support from fundamentals and demand from stainless steel and new energy sector.

Chinese nickel producer Jien halts cathode output

The global nickel market deficit narrowed to 20,100 tonnes in June compared a shortfall of 23,600 tonnes in May

Warehouse stock for Nickel at LME was at 197298mt that is down by -816mt.



ALUMINIUM

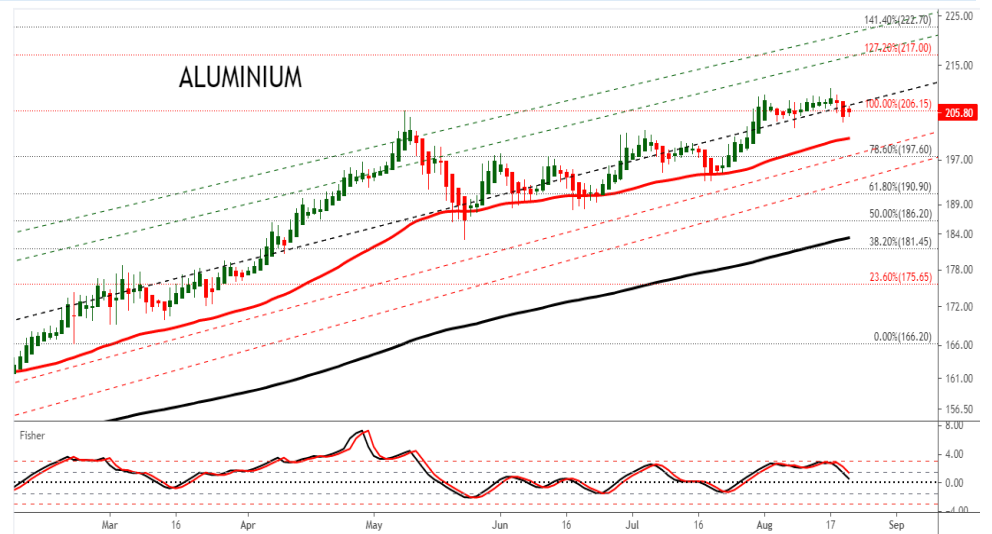
Aluminium trading range for the day is 205.6-209.2.

Aluminium gains as output is expected to shrink further in Q3 in view of short supply of power and intensified control over energy consumption and pollution.

One global aluminium producer seeks Q4 premiums of \$230/T

Global primary aluminium output rose to 5.747 million tonnes in July from an upwardly revised 5.558 million tonnes in June

Warehouse stock for Aluminium at LME was at 1300250mt that is down by -4700mt.



COPPER PRICE MOVEMENT SINCE 2012

Year	JAN	FEB	MAR	APR	MAY	JUN	JUL	AUG	SEP	OCT	NOV	DEC	Grow th
2012	417.15	417.70	431.65	443.90	420.25	429.40	422.55	424.30	441.05	419.70	436.30	443.75	37.75
	2.75	0.13	3.34	2.84	-5.33	2.18	-1.60	0.41	3.95	-4.84	3.96	1.71	9.30
2013	440.05	418.20	410.20	381.00	413.05	406.60	421.55	486.95	466.40	452.50	444.40	468.55	24.80
	-0.83	-4.97	-1.91	-7.12	8.41	-1.56	3.68	15.51	-4.22	-2.98	-1.79	5.43	5.59
2014	444.95	443.20	404.15	403.00	410.80	422.35	436.10	417.95	416.00	414.70	390.75	399.10	-69.45
	-5.04	-0.39	-8.81	-0.28	1.94	2.81	3.26	-4.16	-0.47	-0.31	-5.78	2.14	-14.82
2015	342.85	371.80	378.45	404.60	386.65	368.75	335.40	341.75	342.70	336.55	301.15	315.50	-83.60
	-14.09	8.44	1.79	6.91	-4.44	-4.63	-9.04	1.89	0.28	-1.79	-10.52	4.77	-20.95
2016	311.60	322.00	321.25	334.20	312.50	327.15	329.70	305.60	328.55	326.05	396.05	372.90	57.40
	-1.24	3.34	-0.23	4.03	-6.49	4.69	0.78	-7.31	7.51	-0.76	21.47	-5.85	18.19
2017	406.10	397.85	380.75	367.60	368.75	385.20	410.65	434.55	427.95	444.70	431.40	466.00	93.10
	8.90	-2.03	-4.30	-3.45	0.31	4.46	6.61	5.82	-1.52	3.91	-2.99	8.02	24.97
2018	450.90	446.00	436.80	449.40	457.05	446.15	430.15	414.00	452.95	435.70	433.10	407.75	-58.25
	-3.24	-1.09	-2.06	2.88	1.70	-2.38	-3.59	-3.75	9.41	-3.81	-0.60	-5.85	-12.50
2019	437.60	464.70	451.05	450.30	404.50	411.05	444.15	443.95	438.05	437.95	432.60	441.25	33.50
	7.32	6.19	-2.94	-0.17	-10.17	1.62	8.05	-0.05	-1.33	-0.02	-1.22	2.00	8.22
2020	427.25	421.80	376.80	403.45	416.20	464.70	500.75	527.30	525.20	526.40	582.30	594.70	153.45
	-3.17	-1.28	-10.67	7.07	3.16	11.65	7.76	5.30	-0.40	0.23	10.62	2.13	34.78
2021	596.40	702.95	667.95	754.10	768.85	721.50	751.70						157.00
	0.29	17.87	-4.98	12.90	1.96	-6.16	4.19						26.40
Average	-1.25	2.69	-2.53	1.37	-0.91	0.67	3.00	1.32	-0.10	0.35	2.05	2.44	Average

ZINC PRICEMOVEMENTSINCE2012

Year	JAN	FEB	MAR	APR	MAY	JUN	JUL	AUG	SEP	OCT	NOV	DEC	Grow th
2012	105.60	104.00	102.85	107.10	107.15	103.95	103.20	100.60	110.45	99.30	110.55	111.45	13.00
	7.26	-1.52	-1.11	4.13	0.05	-2.99	-0.72	-2.52	9.79	-10.10	11.33	0.81	13.20
2013	113.95	111.05	102.90	110.50	106.30	109.70	109.55	128.25	117.80	118.25	116.00	129.05	17.60
	2.24	-2.54	-7.34	7.39	-3.80	3.20	-0.14	17.07	-8.15	0.38	-1.90	11.25	15.79
2014	122.80	130.95	119.05	123.95	122.40	132.45	144.55	142.90	141.10	143.40	138.00	137.20	8.15
	-4.84	6.64	-9.09	4.12	-1.25	8.21	9.14	-1.14	-1.26	1.63	-3.77	-0.58	6.32
2015	130.40	127.70	129.90	149.75	141.05	127.10	122.85	121.30	108.90	109.10	103.20	106.15	-31.05
	-4.96	-2.07	1.72	15.28	-5.81	-9.89	-3.34	-1.26	-10.22	0.18	-5.41	2.86	-22.63
2016	109.25	122.45	118.40	129.20	129.30	142.15	148.80	155.90	158.10	163.90	185.55	173.80	67.65
	2.92	12.08	-3.31	9.12	0.08	9.94	4.68	4.77	1.41	3.67	13.21	-6.33	63.73
2017	193.10	187.70	180.40	169.45	165.95	178.25	179.50	200.95	210.20	215.05	205.95	207.60	33.80
	11.10	-2.80	-3.89	-6.07	-2.07	7.41	0.70	11.95	4.60	2.31	-4.23	0.80	19.45
2018	228.60	227.75	214.10	211.75	209.05	202.15	180.40	176.10	186.65	192.60	180.20	171.95	-35.65
	10.12	-0.37	-5.99	-1.10	-1.28	-3.30	-10.76	-2.38	5.99	3.19	-6.44	-4.58	-17.17
2019	195.15	197.80	221.35	223.20	203.00	200.50	192.25	185.30	185.55	187.85	185.05	179.00	7.05
	13.49	1.36	11.91	0.84	-9.05	-1.23	-4.11	-3.62	0.13	1.24	-1.49	-3.27	4.10
2020	174.45	154.85	145.50	150.60	159.00	163.50	184.00	196.05	190.80	201.80	220.20	214.40	35.40
	-2.54	-11.24	-6.04	3.51	5.58	2.83	12.54	6.55	-2.68	5.77	9.12	-2.63	11.81
2021	205.90	219.55	220.00	232.45	237.35	240.20	248.15						33.75
	-3.96	6.63	0.20	5.66	2.11	1.20	3.31						11.81
Average	0.89	1.16	-2.09	2.90	-2.20	0.65	2.74	2.59	-0.91	1.82	0.66	0.77	Average

NICKEL PRICE MOVEMENT SINCE 2012

Year	JAN	FEB	MAR	APR	MAY	JUN	JUL	AUG	SEP	OCT	NOV	DEC	Growth
2012	1050.20	974.30	927.40	936.60	923.80	935.40	892.80	884.40	978.50	878.50	931.70	935.70	-56.50
	5.85	-7.23	-4.81	0.99	-1.37	1.26	-4.55	-0.94	10.64	-10.22	6.06	0.43	-5.69
2013	979.10	895.70	921.50	824.00	826.70	823.90	829.20	928.20	869.80	892.20	836.90	864.50	-71.20
	4.64	-8.52	2.88	-10.58	0.33	-0.34	0.64	11.94	-6.29	2.58	-6.20	3.30	-7.61
2014	855.80	902.80	945.50	1097.40	1139.60	1124.30	1130.40	1140.30	1016.80	971.00	996.80	945.70	81.20
	-1.01	5.49	4.73	16.07	3.85	-1.34	0.54	0.88	-10.83	-4.50	2.66	-5.13	9.49
2015	922.90	874.90	779.70	881.00	808.00	744.50	698.50	668.10	661.90	660.90	583.50	582.00	-363.70
	-2.41	-5.20	-10.88	12.99	-8.29	-7.86	-6.18	-4.35	-0.93	-0.15	-11.71	-0.26	-38.46
2016	579.80	577.60	549.10	629.10	568.50	636.40	700.00	651.20	703.30	696.30	751.20	706.00	169.20
	-0.38	-0.38	-4.93	14.57	-9.63	11.94	9.99	-6.97	8.00	-1.00	7.88	-6.02	29.07
2017	670.30	725.30	640.10	608.90	568.50	600.60	655.70	743.70	692.60	766.30	727.50	783.40	77.40
	-5.06	8.21	-11.75	-4.87	-6.63	5.65	9.17	13.42	-6.87	10.64	-5.06	7.68	10.96
2018	863.10	898.30	840.50	926.40	1024.40	1022.30	944.00	909.30	905.00	860.00	774.80	741.60	-41.80
	10.17	4.08	-6.43	10.22	10.58	-0.20	-7.66	-3.68	-0.47	-4.97	-9.91	-4.28	-5.34
2019	884.90	931.10	904.00	854.60	876.50	906.00	1013.50	1245.40	1216.80	1200.40	1005.50	1029.20	287.60
	19.32	5.22	-2.91	-5.46	2.56	3.37	11.87	22.88	-2.30	-1.35	-16.24	2.36	38.78
2020	943.80	901.00	860.10	922.60	940.40	975.00	1041.90	1135.70	1065.30	1142.70	1206.70	1212.20	183.00
	-8.30	-4.53	-4.54	7.27	1.93	3.68	6.86	9.00	-6.20	7.27	5.60	0.46	17.78
2021	1286.90	1367.70	1184.10	1316.90	1328.40	1363.90	1484.10						151.70
	6.16	6.28	-13.42	11.22	0.87	2.67	8.81						12.51
Average	3.37	1.29	-2.98	4.20	-3.04	0.58	3.21	3.12	-1.76	0.18	-3.13	1.80	Average

ALUMINIUM PRICE MOVEMENT SINCE 2012

Year	JAN	FEB	MAR	APR	MAY	JUN	JUL	AUG	SEP	OCT	NOV	DEC	Growth
2012	112.15	112.65	108.35	108.05	111.35	105.65	103.95	103.00	110.95	101.85	113.35	111.75	4.80
	4.86	0.45	-3.82	-0.28	3.05	-5.12	-1.61	-0.91	7.72	-8.20	11.29	-1.41	4.49
2013	110.50	105.40	103.65	100.10	105.95	105.05	105.85	122.10	113.15	112.55	106.75	109.20	-2.55
	-1.12	-4.62	-1.66	-3.42	5.84	-0.85	0.76	15.35	-7.33	-0.53	-5.15	2.30	-2.28
2014	103.90	107.00	104.00	106.75	107.65	111.20	121.45	126.70	119.20	126.85	128.35	116.00	6.80
	-4.85	2.98	-2.80	2.64	0.84	3.30	9.22	4.32	-5.92	6.42	1.18	-9.62	6.23
2015	113.45	112.40	111.95	121.40	108.75	104.95	102.00	107.15	102.60	94.40	96.35	100.15	-15.85
	-2.20	-0.93	-0.40	8.44	-10.42	-3.49	-2.81	5.05	-4.25	-7.99	2.07	3.94	-13.66
2016	103.80	111.25	98.90	111.25	104.00	110.55	108.30	107.20	110.55	115.95	118.00	117.20	17.05
	3.64	7.18	-11.10	12.49	-6.52	6.30	-2.04	-1.02	3.12	4.88	1.77	-0.68	17.02
2017	123.40	126.45	126.20	123.90	123.90	123.55	121.95	135.30	137.90	138.60	131.00	143.30	26.10
	5.29	2.47	-0.20	-1.82	0.00	-0.28	-1.30	10.95	1.92	0.51	-5.48	9.39	22.27
2018	141.65	140.50	130.65	148.50	154.15	149.70	141.40	150.10	145.90	143.95	137.20	128.15	-15.15
	-1.15	-0.81	-7.01	13.66	3.80	-2.89	-5.54	6.15	-2.80	-1.34	-4.69	-6.60	-10.57
2019	136.00	151.10	149.15	146.20	145.35	143.20	140.35	138.70	134.60	132.00	133.55	137.25	9.10
	6.13	11.10	-1.29	-1.98	-0.58	-1.48	-1.99	-1.18	-2.96	-1.93	1.17	2.77	7.10
2020	139.10	136.70	134.45	131.00	131.70	137.95	140.90	146.15	143.80	152.95	167.05	160.95	23.70
	1.35	-1.73	-1.65	-2.57	0.53	4.75	2.14	3.73	-1.61	6.36	9.22	-3.65	17.27
2021	162.25	173.50	176.65	193.70	196.65	198.75	206.75						45.80
	0.81	6.93	1.82	9.65	1.52	1.07	4.03						28.46
Average	0.81	2.06	-1.72	3.02	-0.60	-0.82	1.25	3.31	-0.75	-0.12	0.53	0.61	Average

GENERAL DISCLAIMERS

KEDIA ADVISORY

This Report is prepared and distributed by Kedia Stocks & Commodities Research Pvt Ltd. for information purposes only. The recommendations, if any, made herein are expression of views and/or opinions and should not be deemed or construed to be neither advice for the purpose of purchase or sale through KSCRPL nor any solicitation or offering of any investment /trading opportunity. These information / opinions / views are not meant to serve as a professional investment guide for the readers. No action is solicited based upon the information provided herein. Recipients of this Report should rely on information/data arising out of their own investigations. Readers are advised to seek independent professional advice and arrive at an informed trading/investment decision before executing any trades or making any investments. This Report has been prepared on the basis of publicly available information, internally developed data and other sources believed by KSCRPL to be reliable. KSCRPL or its directors, employees, affiliates or representatives do not assume any responsibility for, or warrant the accuracy, completeness, adequacy and reliability of such information / opinions / views. While due care has been taken to ensure that the disclosures and opinions given are fair and reasonable, none of the directors, employees, affiliates or representatives of KSCRPL shall be liable for any direct, indirect, special, incidental, consequential, punitive or exemplary damages, including lost profits arising in any way whatsoever from the information / opinions / views contained in this Report. The possession, circulation and/or distribution of this Report may be restricted or regulated in certain jurisdictions by appropriate laws. No action has been or will be taken by KSCRPL in any jurisdiction (other than India), where any action for such purpose(s) is required. Accordingly, this Report shall not be possessed, circulated and/ or distributed in any such country or jurisdiction unless such action is in compliance with all applicable laws and regulations of such country or jurisdiction. KSCRPL requires such recipient to inform himself about and to observe any restrictions at his own expense, without any liability to KSCRPL. Any dispute arising out of this Report shall be subject to the exclusive jurisdiction of the Courts in India.

For more details, please **contact:**

 +91 9323406035 / 9619551022

 info@kediaadvisory.com

 www.kediaadvisory.com

KEDIA STOCKS & COMMODITIES RESEARCH PVT LTD.
Mumbai, IN.

SEBI REGISTRATION NUMBER - INH000006156

